

MODERN



Cooke S5/i T1.4

Spherical : Super 35 (but has good covering power many focal lengths will cover FF)

This lens has minimal barrel distortion, minimal falloff and little focus breathing

Organic, lemon shaped bokeh

Subtle, blue ring flares with some multi-iris reflections

Mid contrast/warm

The S7's cover Full Frame and have flare characteristics similar to the signature primes (T2)



Mini Hawks T1.7

Spherical/Hybrid : Super 35

Almost no barrel distortion at S35, no focus breathing, minimal falloff

Blocky oval bokeh replicating that of an anamorphic lens

Multi-iris flare with glow. Flares inherit the colour of the light source

Mid/high contrast. Reduced focal length effect on these lenses 65 looks like 35



Genesis G35 T1.4

Spherical : Full Frame

Noticeable barrel distortion, strong falloff but minimal focus breathing

Round and lemon shaped bokeh

Very subtle blue ring flares

High contrast



Arri Signature Primes T2

Spherical : Full Frame

Very little distortion and focus breathing, slight gradual falloff

Organic round bokeh

Soft glow flare with X shape, multi-iris elements. Inherits colour of light source

Mid contrast

Has the ability to add impression filters to change lens characteristics

VINTAGE 1



Cooke Pancro T2.2 (modern glass vintage characteristics)

Spherical : Full Frame

This lens has minimal barrel distortion but significant falloff and mild focus breathing

Organic round bokeh

Clean multi-iris blue flare with a slight glow

Mid/high contrast lens



Mamiya T2.8

Spherical : Full Frame

This lens has significant barrel distortion, fall off and focus breathing

Round organic bokeh at the centre, oval at the edges

Peacock flare with glow and multi-iris. Flares inherit the colour of the light source

Medium contrast



Lomos T2.4

Spherical : Super 35+

This lens has minimal distortion with some falloff

Organic, round bokeh

Strong astigmatism that results in blue star flares. (This example is a partial flare)

Low contrast



Petzval T2.1

Spherical : Full Frame

This lens has mild falloff and a very strong radial distortion

Round bokeh at the centre and oval at the edges

Unique large circular rainbow flare

High contrast

VINTAGE 2



Zeiss Super Speeds T1.3

Spherical : Super 35

This lens has mild distortion, significant falloff and gentle focus breathing

Organic round bokeh

Soft glowing flares with rings, magenta hues, inherits and emphasises colour of light source

Low/mid contrast lens



Leica R T1.5/T3

Spherical : Full Frame - low profile

This lens has significant distortion, strong falloff and strong focus breathing

Round organic bokeh at the centre, lemon shaped at the edges

Large glowing flares with some soft multi-iris elements and large circle flares

Low/mid contrast



Blackwing T1.9 (modern glass but vintage characteristics)

Spherical : Full Frame

This lens has slight barrel distortion and fall off with very little focus breathing

Organic, round bokeh

Extremely strong flares that inherit source colour. Magenta hues, circular and rainbow flares

Low contrast / warm

Anamorphic



Hawk v-lites T2.2

Anamorphic 2x : Super 35

This lens has very light edge distortion, subtle falloff at the edge but strong focus breathing
Strong oval bokeh

Strong streak flare when centred, rainbow peacock flare when light source is from the side
Low contrast

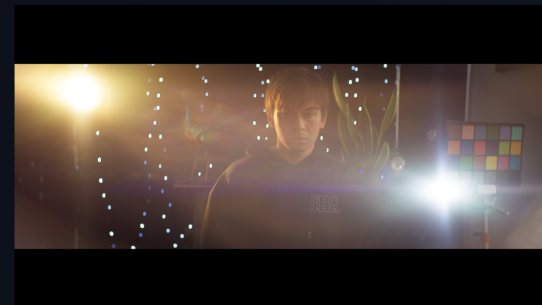


Atlas Orion T2

Anamorphic 2x : Super 35

This lens has very little distortion and fall off, but strong focus breathing at close focus
Diamond shaped bokeh

Very strong streak flare with additional multi-iris and rainbow fan elements. Takes on the colour of the source
Mid/high contrast



Cooke Anamorphic T2.3

Anamorphic 2x : Super 35

This lens has medium distortion with radial fringing, Noticeable falloff and focus breathing.
Blocky anamorphic bokeh (almost rectangular)

Soft glow and star flares that inherit light source colour. Minimal streak flares.

High contrast (slightly milky wide open but high contrast when stopped down 1.5 stops)



Kowa Average T stop T2.3 (varied)

Anamorphic 2x : Super 35 (suggest changing desqueeze to 1.85 for closeups)

This lens has very strong distortion fall off and focus breathing

Organic oval bokeh

Streak flare and glow with magenta tinge. Flares inherit light source colour

Low contrast. Stopping down to T4 negates a lot of the "fruityness"